



Cork Opera House

Technical Specification

Revision: August 2007

CONTENTS

ITEM	PAGE
Contents - This Page	I
Stage Specification	II
Dressing Room Accommodation	II
Orchestra Accommodation	II
Laundry	II
Electrics - Lantern List	III
Lighting Control & Dimming	III
Rigging Equipment	IV
Mains Power Supplies	IV
Access Equipment	IV
Sound System – Basic System	V
Full System	VI
Pyrotechnics	VIII
Communications	VIII
Contacts	IX
Drawings - Stage Plans/Section	X-XII
- Dimmer Circuit Layout	XIII
Flying bar distances	XIV
Images	XV-XVII

PLEASE NOTE THAT INCLUSION IN THIS SPECIFICATION DOES NOT CONFIRM AVAILABILITY OF ANY PARTICULAR ITEM OR FACILITY - PLEASE DISCUSS YOUR REQUIREMENTS IN ADVANCE TO AVOID CONFUSION.

STAGE

- Proscenium Stage - Flat
- Proscenium Opening - 12.5m
- Proscenium Height - 7.32m
- Depth From Iron to Cyclorama - 8.84m (Cyc. at furthest upstage hemp-set)
- Width of Backstage Area - 15.54m
- Depth of Backstage Area - 4.88m
- Grid Steel Height - 18.29m
- Wing Width from Onstage Fly-rail - 5.18m
- Maximum Working Height of Scenery - 6.01m
- Width of Counterweight Flying Bars - 12.2m / 12.4m
- Number of Counterweight Bars - 27
- Max load per bar - 600lbs (272Kg)
- Maximum Number of Spotted Hemp-Sets - 12 (Can be set as required)
- Limited Flying Facilities in Backstage Area (Normally three 3-block hemp-sets)
- Prompt Corner - Stage Left
- Pass Door to Front of House - Stage Right
- Get-in Doors Stage Left - approx. 3.5m (W) X 3.35m (H) - 1.2m drop to street level
- No ramps in theatre
- Trap - Mid-Stage (0.9m X 0.9m with counterweighted elevator trap)

DRESSING ROOM

- 7 Rooms in total
- 6 at first floor level and 1 at second floor level
- 2 En Suite with Showers
- 1 with Shower only

ORCHESTRA PIT

- Accommodates up to 25 players
- Can be extended into auditorium to accommodate 70 players
- Music stands can be hired locally
- Piano can be hired locally
- Limited chairs available

LAUNDRY

- Washing Machine and Dryer is available

ELECTRICS

Lanterns

- 12 X Cantata F - 1.2kW Fresnels - Beam Angle 8/50°
- 24 X Robert Juliat 310 HF – 1.2kW Fresnels - Beam Angle 6/46°
- 4 X Strand 243 (Retrofitted) – 2kW Fresnel – Beam Angle 15/50°
- 50 X PAR 64 (various beamwidths) - 1kW PAR Cans
- 2 X Cantata 18/32 - 1.2kW Zoom Profiles - Beam Angle 18/32°
- 3 X Cantata 11/26 - 1.2kW Zoom Profiles - Beam Angle 11/26°
- 2 X ETC Source 4 50° - 575W Profiles - Beam Angle 50°
- 10 X ETC Source 4 26° - 575W Profiles - Beam Angle 26°
- 20 X ETC Source 4 36° - 575W Profiles - Beam Angle 36°
- 18 X ETC Source 4 Zoom – 575W Zoom Profiles - Beam Angle 15/30°
- 8 X Berkey 4-way Cyc. Units - 500W/625W Asymmetric Floods
- 8 X Berkey 4-way Cyc. Units (Ground row) - 500W/625W Asymmetric Floods

Followspots

- 2 X Strand Solo 1kW CSI Followspots

Additional Equipment – Subject to Hire Charge

- 6 X Martin Mac 500 575W MSR Moving Head Profile
- 4 X Martin Mac 600 575W MSR Moving Head Wash
- 6 X Robe Spot 250XT 250W MSD Moving Head Profile
- 4 X Robe Wash 250XT 250W MSD Moving Head Wash Light
- 6 X Martin Roboscan Pro 918 575W MSR Moving Mirror Lantern
- 6 X Chroma Q CQ1D 16-frame Colour Scroller
- 4 X Rainbow 8" Pro 16-frame Colour Scroller
- 1 X JEM Stagehazer w/ DMX Control
- 1 X Martin Magnum Hazer w/ DMX Control
- 2 X Martin Magnum 800 Fog Machines
- 1 X Le Maitre Microfog Fog Machine

Colour Filters not supplied by theatre.

Lighting Control And Dimming

- Strand 520 (300 intensity & 250 attribute channel)
- 1 X Avolites Pearl Expert (Subject to Hire Charge)
- 156 X 3kW ETC Sensor Dimmers
- 36 X 5kW ETC Sensor Dimmers

Please note that all 3kW dimmer outlets are 16A CEE Type and 5kW outlets are 32A CEE type connectors. Pre-Wired Bars and Dips are fed from 6-way Socapex connectors - Please see included circuit layout diagram for more details

Rigging & Miscellaneous Equipment – May Be Subject to Hire Charge

- 4 X Fixed Base Booms – approx. 5m each
- 4 X Steel Boom Bases
- 4 X MDF Boom Bases
- Boom Poles of various height
- Various boom arms, rigging accessories, etc.
- 2 X Lodestar Model F 500kg Direct Control Chain Hoist w/ 18m Chain
- 1 X Lodestar 19" Rack Mount 4 Channel Motor Controller w/ 25m Control Cables
- Various slings, span-sets and shackles
- 4 X 3m F34 290mm Square Truss Sections

Please note that the use of certain rigging equipment requires a qualified rigger to be engaged for set-up and take-down

Mains Supplies

- 1 X 250A 3-Phase Supply Located USR - Tails / Powerlock
- 1 X 63A 3-Phase Supply Located DSR (3 ϕ 63A CEE Type Connector)
- 1 X 32A 3-Phase Supply Located DSR (3 ϕ 32A CEE Type Connector)
- 2 X 32A Single Phase Supplies Located DSR
- 2 X 32A Single Phase Supplies Located DSL
- Various 16A, 15A and 13A supplies

Audio Supply (Yellow Phase Only) - All Located DSL

- 4 X 13A Single Phase (13A Sockets)
- 1 X 15A Single Phase (15A Socket)
- 3 X 16A Single Phase (CEE Type Sockets)
- 3 X 32A Single Phase (CEE Type Sockets)
- 1 X 63A Single Phase (Tails Only)

Access Equipment

Tallescope Model 50524

Maximum Working Height 9.5m (At Platform Height 7.5m)
Minimum Platform Height 4.7m

Aluminium 3 Section Combination Ladder (3x12 Rung Zarges Type)

Maximum Working Height 7.01m
Maximum Working Height (Used as 3-Piece Lean-to) 9.56m

SOUND SYSTEM

BASIC SYSTEM – AS PER BASIC RENTAL CONTRACT

Console

- Yamaha O1V96 (12ch + 4 line)

Multi Core system

- 1 X 48 in 192 out XTA DS800 active splitter

Microphones

- 6x Shure SM58
- 6x Shure SM57
- 4x Active DI Boxes

Speaker System

FOH

Martin W8LM Line Array

- 16 X W8LM line array
- 4 X WLXG Subs
- 2 X DX1 Controller

Foldback

Monitors

- 4 X Electro-voice SX300's

Amplification

Wedge Monitor Amplification

- Yamaha PS Series

All Other Amplification

- Martin Audio MA series

Extras

The following items are not part of our regular tech-spec but can be hired to incoming productions and shows for a nominal charge.

Radio microphones

- 4 X Mipro Receivers
- 4 X Mipro Transmitters w/ clip mics
- 4 X Mipro Hand-Held Radio Mics

FULL SYSTEM – SUBJECT TO ADDITIONAL HIRE CHARGES

Analogue Console

- Midas Heritage 1000 (44+ 4 Stereo)

Digital Consoles

- Yamaha PM5D (48ch + 4 Stereo)
- Yamaha DM2000 (56ch + 24 line (4x AD8HR 8-way digital preamps))
- Yamaha O1V96 (12ch + 4 line)

FOH Rack

- 1 X XTA 31 band EQ
- 1 X Tascam CDRW-750 CD recorder
- 2 X Tascam CD-160 CD players
- 2 X Tascam MD-350 mini disk players
- 4 X XTA C2 dual compressors
- 4 X XTA G2 dual gates
- 2 X Lexicon MPX 1
- 2 X Yamaha SPX 2000

Multi Core System

- 2 X 48 in 192 out XTA DS800 active splitter

Microphones

- 10 X Shure SM58
- 10 X Shure SM57
- 4 X Shure SM86
- 2 X Shure SM81
- 2 X Shure Beta 56
- 2 X Shure Beta 91
- 8 X Shure Beta 98HC
- 4 X AKG 451 (2 by matched pairs)
- 6 X AKG 568C (Rifle Mics)
- 8 X Active DI boxes
- 1 X 8-way Active DI 1u Rack

Speaker System

PA

- Martin W8LM Line Array
- 16 X W8LM Line Array
- 4 X WLXG Subs
- 3 X DX1 Controller

Centre fills

- 4 X Martin AQ5's

Box Fills

- 2 X Martin AQ5's
- 1 XDX1 Controller

Surround System

- 6 X Martin F-10 Blackline (3 stalls & 3 balcony)

Foldback

Monitors

- 12 X Martin LE12JB Bi-amped
- 7 XDX1 Controller

Drum Fill

- 1 X Martin LE12JB Bi-amped
- 1 X Martin S18 sub

Side Fills

- 2 X Martin S-218 Blackline Subs
- 2 X Martin H3 Blackline 3-way
- 1 XDX1 Controller

Amplification

Wedge Monitor Amplification

- Martin Audio E1300 series

All Other Amplification

- Martin Audio MA series: 1.3's – 1.6's – 2.8's – 4.2's

Extras

The following items are not part of our regular tech-spec but can be hired to incoming productions and shows for a nominal charge.

Radio Microphones

- 16 x Trantec S5000 Receivers
- 18 x Trantec S5000 Belt Pack Transmitters
- 18 x Sennheiser MKE Gold-2 Mics
- 4 x Mipro Receivers
- 4 x Mipro Transmitters w/ Clip Mics
- 4 x Mipro Hand-Held Radio Mics

Analogue Monitor Console Solution

For those not comfortable with using a digital desk as a monitor mix console, ie. PM5D, we can provide the following analogue solution:

- 1 X Allen & Heath GL3300 32ch. 8 bus (up to 10 mixes max.)
- 4 X BSS Dual 31-band EQ

- 4 X dbx 1066 dual Compressor/Gate
- 1 X Yamaha REV 500
- 1 X Yamaha SPX 90

PYROTECHNICS – SUBJECT TO ADDITIONAL HIRE CHARGES & STRICT CONTROLS

NB Use of the Pyrotechnics is strictly controlled and may be subject to license

- 1 X Le Maitre Pyroflash 6/24 Controller
- 1 X Le Maitre Prostage Two Way Controller
- 2 X Le Maitre Pyroflash Splitter
- 10 X Le Maitre Pyroflash Professional Flash Pods (Stainless Steel)
- 4 X Le Maitre Pyroflash Variable Angle Flash Pods
- Variety of cables
- Lockable steel-frame safe/strong-box for storage

COMMUNICATIONS

- Tecpro Ring Intercom System
- Master Station at Prompt Corner
- 8 X Belt Pack units with Head Sets
- Show Relay and Dressing-room/Backstage calls system
- ASL 12-Channel Cue Light System w/ 12 X Outstations

AUDIO-VISUAL EQUIPMENT – SUBJECT TO ADDITIONAL HIRE CHARGES

- Barco Reality 6500 LCD Projector w/ 1.4:2.1 Zoom Lens
- Christie DS+65 DLP Projector w/ 1.7-2.5:1 Zoom Lens
- 4 X 21" Video Monitors (Composite/S-Video Input)
- 2 X Composite Video Distribution Amplifiers
- 2 X 4x1 Composite Video Switchers
- Various VGA/RG59 Cables
- DVD Playback Equipment
- Colour Video Camera at Circle Front for Video Relay

CONTACTS

Staff

Technical Manager: Chris Gaughan
Telephone: +353 21 490 5209
Mobile: +353 86 601 8517
Email: cgaughan@corkoperahouse.ie

Stage Manager: Declan O' Mullane
Telephone: +353 21 490 5209
Mobile: +353 87 973 7900
Email: stagemanager@corkoperahouse.ie

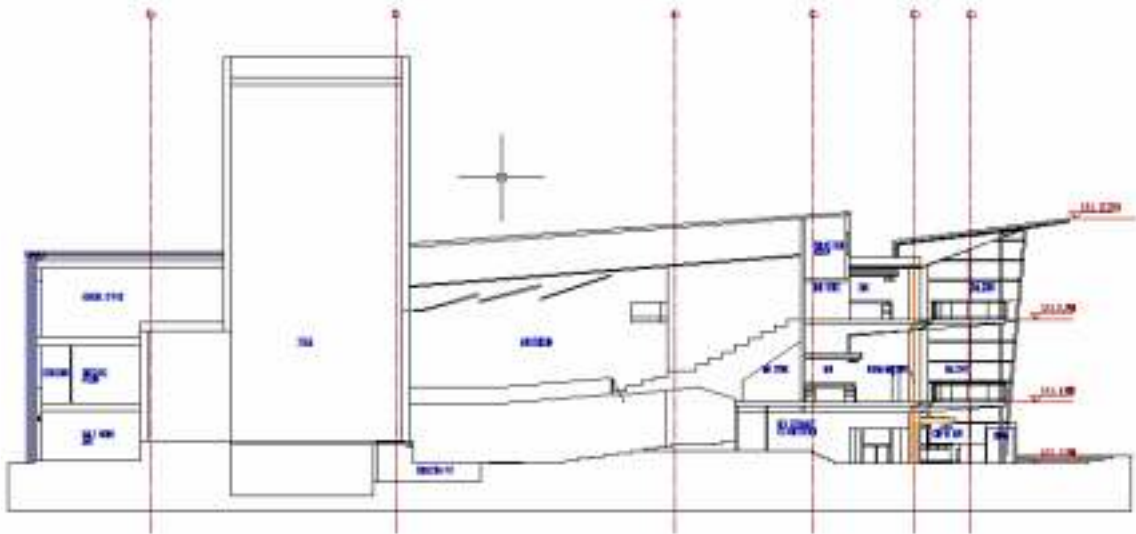
Chief Electrician: Mick Hurley
Telephone: +353 21 490 5210
Mobile: +353 86 807 3517
Email: mickhurley@corkoperahouse.ie

Sound Engineer: Lawrence White
Telephone: +353 21 490 5210
Mobile: +353 87 623 0717
Email: techoffice@corkoperahouse.ie

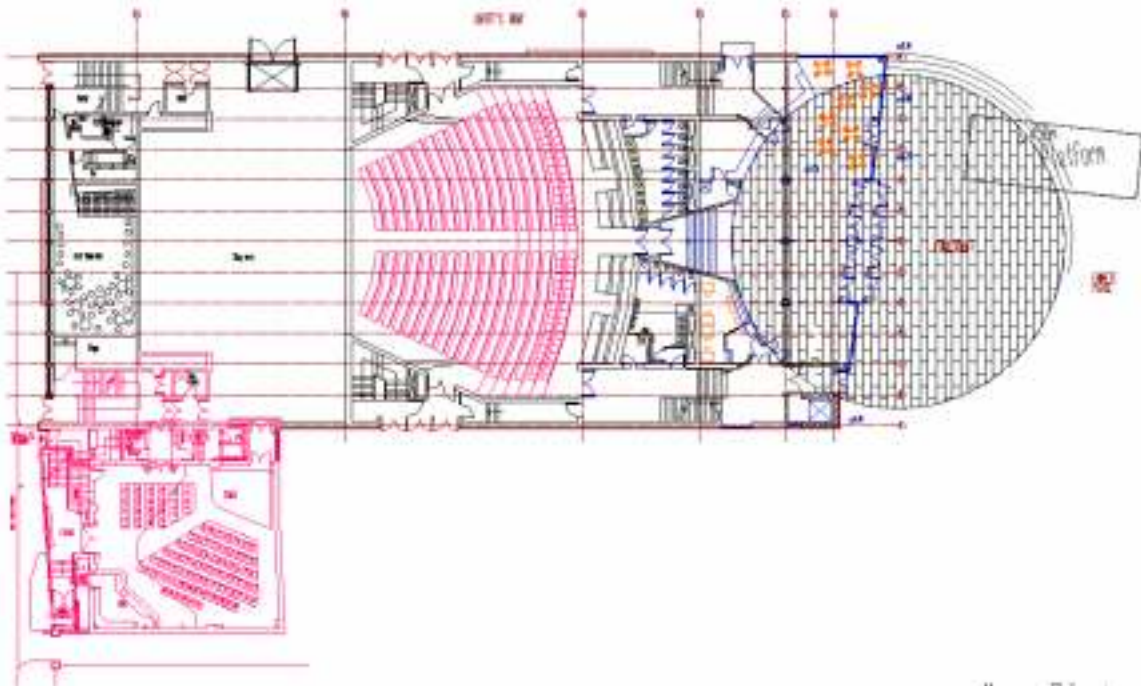
General Contacts

Telephone: +353 21 490 5209
Fax: +353 21 427 6357
Email: techoffice@corkoperahouse.ie

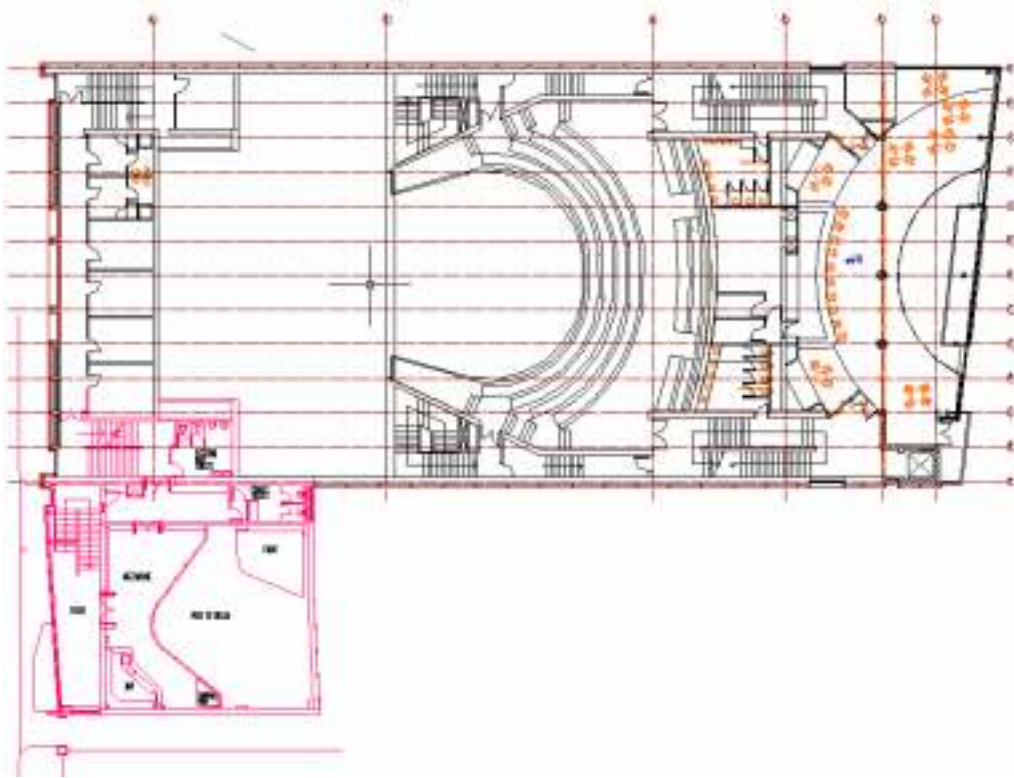
House Manager: Avril Stroms
Telephone: +353 21 490 5212
Email: astroms@corkoperahouse.ie



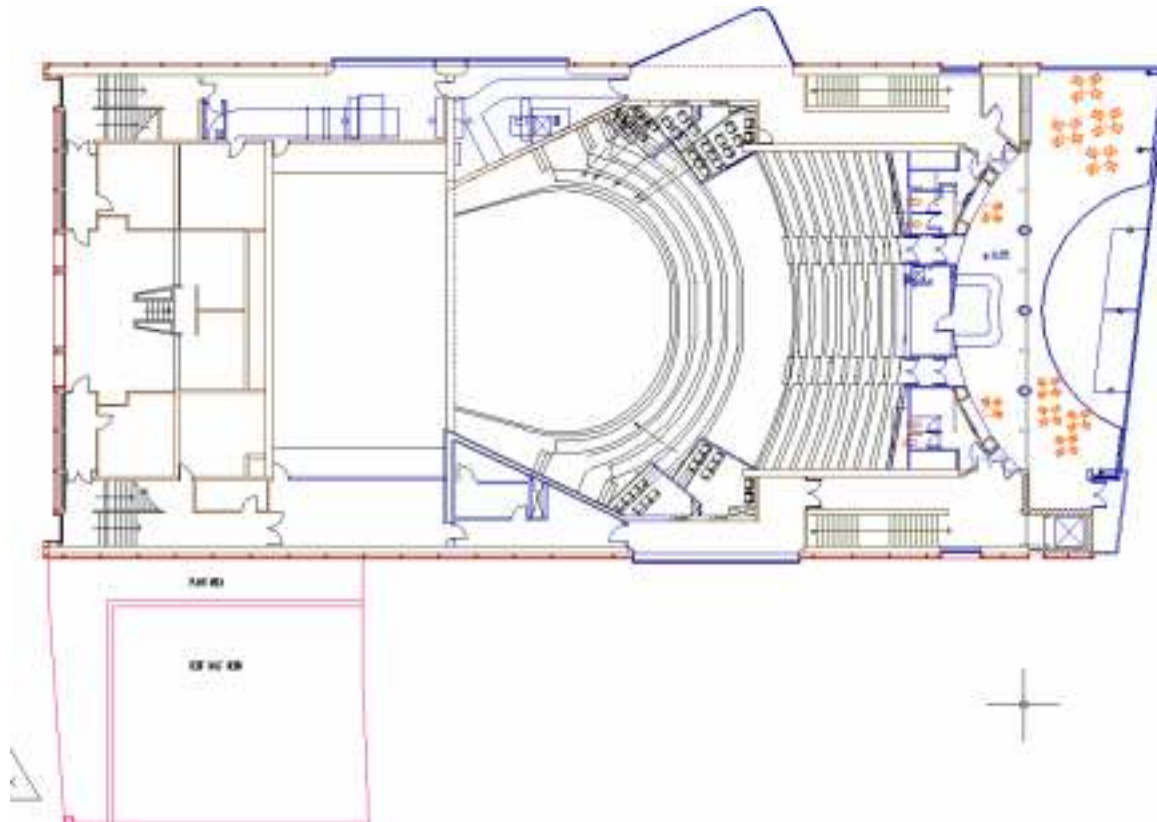
Section



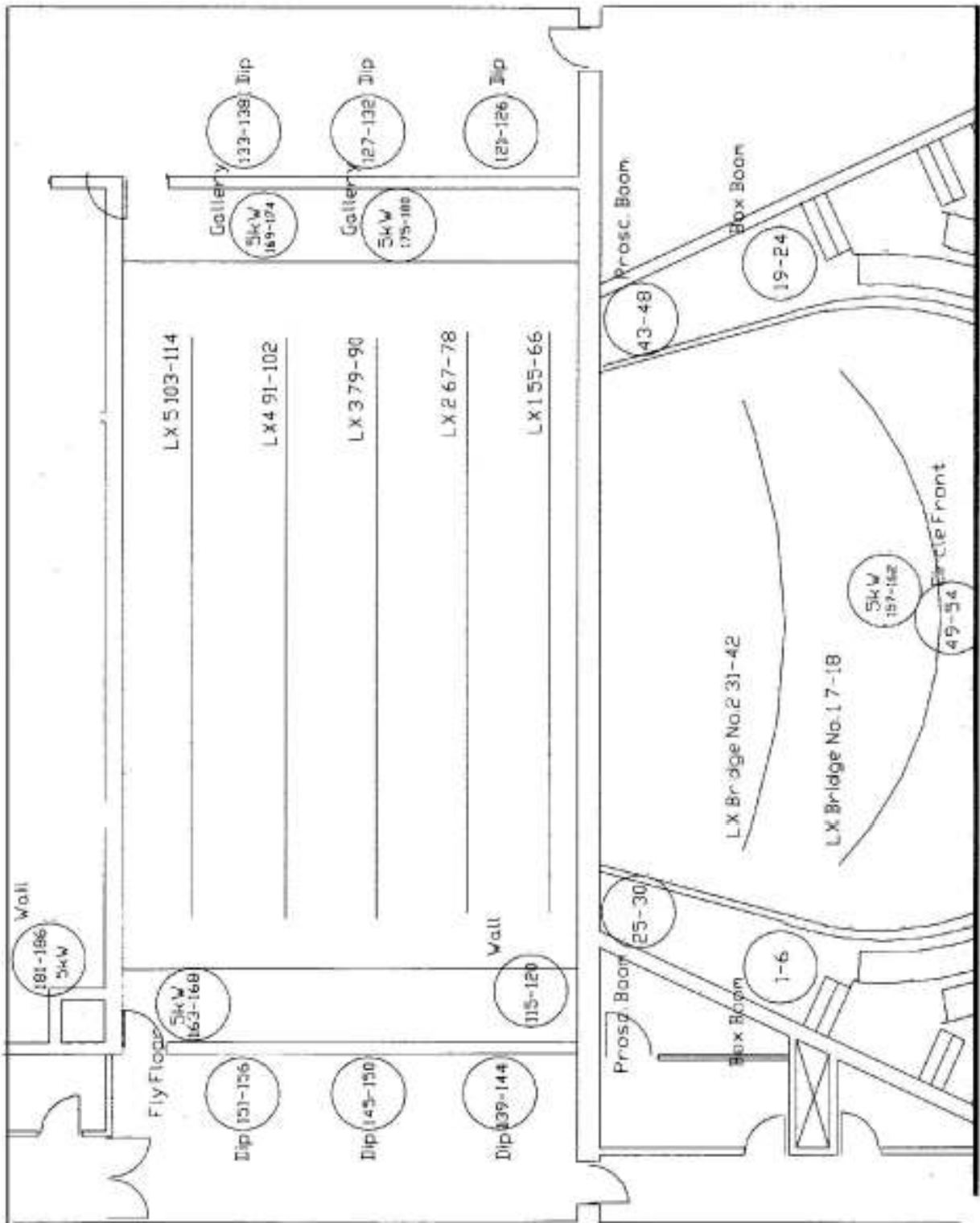
Ground Floor



First Floor



Second Floor



Dimmer Circuit Layout - Do Not Scale

FLYING BAR POSITIONS

Setting line taken from U.S. mark of Fire Iron track which is 22.3cm from back of proscenium wall.

Bar No.	Distance from back of iron	
1	0.13m	House Tabs
2	0.36m	House border
3	0.7m	LX 1
4	1.13m	
5	1.62m	
6	1.8m	
7	2.03m	
8	2.3m	
9	2.5m	
10	2.75m	
11	2.98m	
12	3.2m	
13	3.4m	
14	3.7m	
15	4.15m	
16	4.38m	
17	4.6m	
18	4.84m	
19	5m	
20	5.27m	
21	5.5m	
22	5.7m	
23	5.97m	
24	6.13m	
25	6.33	
26	6.53	
27	7m	
28	7.5m	
29	7.8m	
30	8m	
Hemp	8.7m	Usual cyclorama position

Total hemp sets 10, can be spotted as required. Average time to spot 1 hemp is 15 mins. Cloths only to be flown on hemps, no hard scenery. Pre-wired lighting bars, 5 in total can be set as required. Maximum lift capacity of single counter-weight is 272kg.



Auditorium – Viewed From DSC



Stage – Viewed from Control Room



Stage – Viewed from House Right Balcony



Stage – Viewed from Back Stalls



Stage – Viewed from House Left Balcony